



LAMAI SAFARI

‘The surest way to make your dreams come true is to live them’

by Isabel de Clercq | Photos © Quintus Strauss unless otherwise indicated

i The name Lamai comes from **LA** (Lars Andreasen) and **MAI** (Pia Mai Buchholtz Andreasen).

Our Story

During 2011, Lars Andreasen and Pia Mai Buchholtz Andreasen visited South Africa as a family with expectations and means to broaden their horizons and passion to become part of South Africa. *This is their story.*

While travelling around several parts of the country, we fell in love with the northern part around the Kruger National Park where our highest expectations as animal lovers were met in all aspects that we could think of. We participated in many excursions and gained first-hand safari experience with the most unforgettable safaris, sunsets, sundowners, animal encounters and everything that you can think of that made our visit to South Africa unforgettable. Reality kicked in after each safari as it became so clear to us that our hearts already belong here. The beauty that South Africa beholds and our passion for this spectacular country soon turned into reality.

💡 Everything went as planned for us after our visit, and with fond memories still fresh in our minds our excitement was soon shared when we became the proud owners of Lamai Safari.

“We pride ourselves on being home to the Big 5.”

Pool area at sunset.

About Lamai Safari

Lamai Safari is an all-inclusive Big 5 Safari Camp that can sleep 30 guests in different accommodation types to suite everyone's needs. A big green terrace overlooking one of our watering holes, the swimming pool for the summer months close to another watering hole and our communal eating and entertainment area are always well enjoyed by our guests. Boma nights with a bonfire is very special to our guests. Game drives are always the highlight with our huge private concession traverse area that stretches over 14 000ha of pristine wilderness in the Balule Nature Reserve, sharing open borders with the world-renowned Kruger National Park.

We pride ourselves on being home to the Big 5. Enjoying your sundowner stop between rocky outcrops characterising this terrain and breakfast picnic with front views of the Olifants River

make this an interesting region to explore while on safari.

Plains game encounters on ATVs and abundance of bird life for the avid birders on a boat safari are some activities to choose from and that you can look forward to experiencing during your stay with us.

With our two wilderness chalets for romantic couples and the not so faint hearted, we offer these chalets unfenced from the rest of the camp where you become one with nature while in the privacy of your own deck looking into the wilderness.



Dining area at Lamai Lodge.

Two waterside chalets overlooking one of our dams around our campground offer privacy with immaculate outdoor showers.

With a fresh outlook and new possibilities for the future, we expanded Lamai Safari in the beginning of 2022 and added two established companies to our portfolio to help us focus on the South African market. We are now the proud owners of not only **Lamai Safari** and **Phuti Bush Camp**, but also added the **Kruger Bush Camp** and **Tambuzi Safaris** to our portfolio.

i Our accommodation

With the wide selection of accommodation and safari packages in our portfolio we cater for families and friends, solo travellers and self-catering groups.



Madiba Room.




Tutu Room's bathroom.



Outside view of chalets.



Phuti Bush Camp

 This self-catering camp is situated opposite Lamai Safari in the Greater Kruger area.

Here your stay will be met with buffalo, eland, giraffe and plains game that frequently visit close to camp, giving you the real feel of staying on a game ranch.

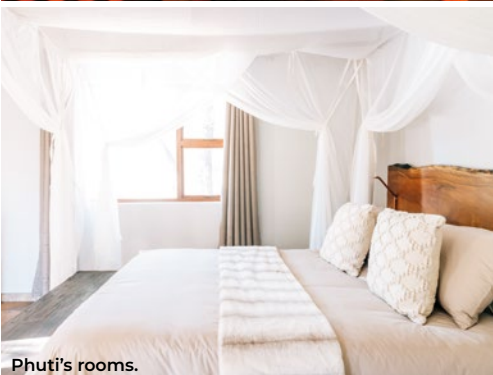
The camp can accommodate up to 10 adults in five en suite chalets. Our chalets are situated perfectly under the trees where each chalet walks out on pathways to our tranquil swimming pool where you can relax and view animals from the deck, our boma area for late-night fires burning under the African skies and the main building with equipped kitchen, self-service bar and dining area.



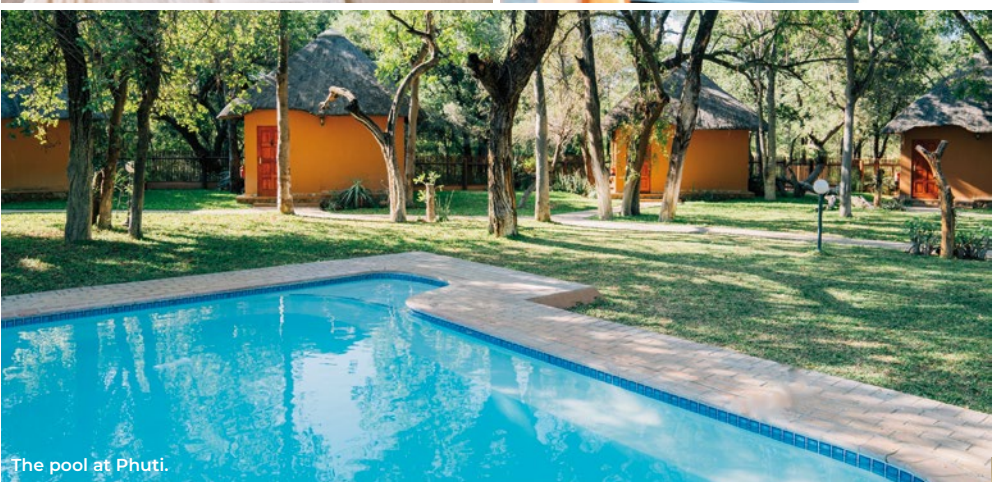
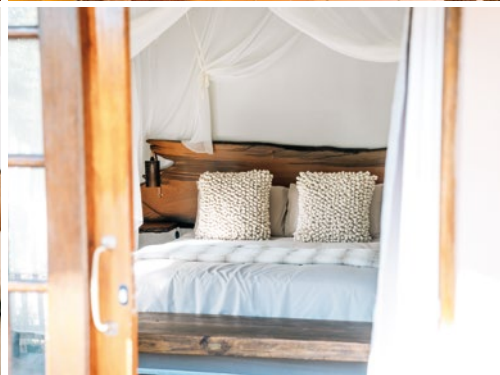
Braai area at Phuti.



Outside leisure area.



Phuti's rooms.



The pool at Phuti.



Chalet view on the dry riverbed.



Dining room, kitchen and bar area.

“Our chalets are situated perfectly under the trees where each chalet walks out on pathways to our tranquil swimming pool.”


For the rainy days you will find yourself enjoying the built-in braai facilities under a thatch roof with ample seating for everyone overlooking the dry riverbed.

Easy access in and out of Phuti Bush Camp for your convenience

makes this the perfect getaway spot. The Kruger National Park's Phalaborwa entrance gate is a mere 25km from Phuti Bush Camp and all other excursions can also be booked with us should you not want to do a self-drive.

Tambuzi Safaris

Exceeding 15 years' experience in the safari industry and having the biggest game drive traverse area in the Greater Kruger, we are ready to explore the Kruger area with you.

 Tambuzi Safaris is a reputable tour operator in the Hoedspruit area that specialises in Kruger National Park Open Vehicle Safaris, Big 5 Game Drives, Blyde River Canyon Panorama Tours, and all activities in and around the Kruger area.

Morning and afternoon game drives are conducted daily in the pristine area of the Balule Nature Reserve on 14 000ha traverse area. Whether you select Group Safaris, Kruger National Park Day Tours, Safari Packages, or any of our accommodation options, this team is ready to make your South African safari exhilarating and you will leave with Africa's memories imprinted in your heart.



Greater kudu (*Tragelaphus strepsiceros*).



Game drive time.



All our Safari Tours can be customised to suite your individual safari needs.

Tambuzi Safaris pride ourselves that all our open safari vehicles are modified to the SABS standards of approval. The vehicles are equipped with individual bucket seats and safety belts to assure your comfort and safety.

With comfort in mind during your Open Vehicle Kruger


National Park Safaris, our front window can open to give you that perfect view at animal sightings. All our open safari vehicles are fitted with cooler boxes providing refreshing mineral water.

Your safety is our priority and therefore our insurance, public liability and Kruger Park accreditations are in place, and we pride ourselves as the number one tour operator in the area.



Kruger Bush Camp

Living up to its name, this camp will give you the utmost calm and peaceful experience that most travellers are looking for.

 This comfortable all-inclusive bush camp situated in the Balule Nature Reserve, sharing open borders with the Kruger National Park, forms part of the Lamai Safari portfolio and is ideal for larger groups, private bookings with your own chef and guide, or relaxed family getaways.

This fenced camp offers guests privacy and being child friendly makes this the perfect attraction for any bush lover.

The Kruger Manor consists of six bedrooms, its own serene swimming pool, outside braai facilities and a green terrace around, which make this feel like home away from home.



Relaxing time at the pool.



Outside area of the Kruger Bush Camp.



Pool area.

The main house has four en suite bedrooms that are all airconditioned and furnished with high quality linen and carefully selected furniture for your comfort. Two king-size rooms can be converted for a bigger family while the other two rooms are double size. Adjacent to the Manor house are two en suite, airconditioned rooms – one is a double room and the other a king-size room.

Kruger Manor is equipped with plug points for electronics, and guests can relax in the outdoor lounge area under the trees or cool down in the centrally located pool.

Wildlife roam freely around the camp and there is an abundance of birdlife. Daily game drives, as well as day trips into the Kruger and surrounding areas can be arranged on request.

“Wildlife roam freely around the camp and there is an abundance of birdlife.”



Attractions

A typical day at Kruger Bush Camp starts with an early morning wake-up call and an activity. During the winter months morning game drives begin later and afternoon drives start a little earlier. In between the morning and evening activities there will be more than enough time for rest and relaxation. Alternatively, other activities can be arranged upon request, including:

- Guaranteed rhino safari.
- Elephant interaction.

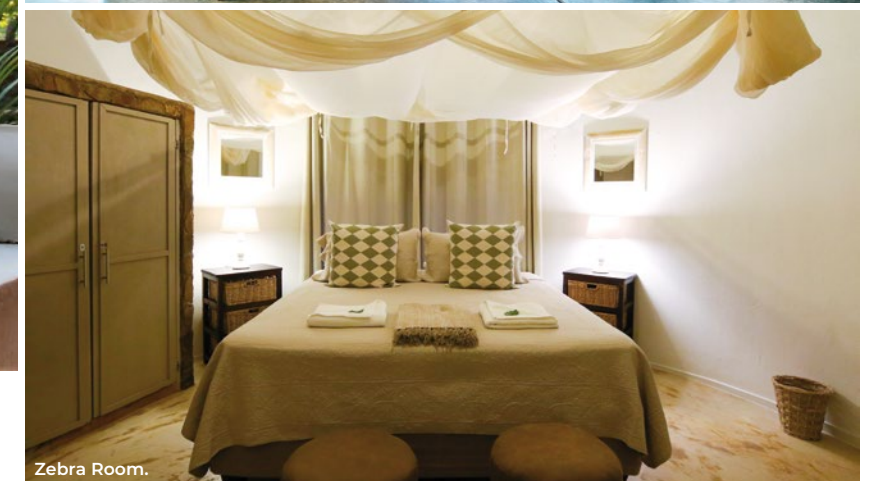


 **Watch this!** Scan the QR code or visit https://www.youtube.com/watch?v=0pXE_oe9CmU to watch the video Lamai Safari South Africa Balule Nature Reserve. Published by Lamai Safari.

For more information, visit www.lamaisafarisa.com
For bookings email info@lamaisafari.com
 www.facebook.com/LamaiSafari |  [lamaisafari](https://www.instagram.com/lamaisafari)



Lounge area.



Zebra Room.



Jackal Room.

- Cheetah walk.
- Morning and evening game drives in the Balule /Maseke Game Reserve.
- Birdwatching.
- Day game drives into the Kruger National Park in open safari vehicles.
- Tailor-made experiences upon request.
- Outside dining under the stars.
- Evening drinks in the boma around a fire.
- Panorama route and Blyde River tours in an airconditioned minibus. ■